

SNAPSHOT

APPLY DECALS WITH A HAIRDRYER

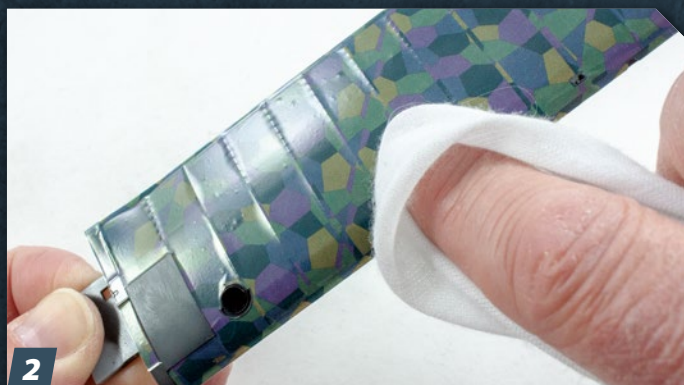
DECALS SOMETIMES REFUSE TO CONFORM to complex shapes or over intricate details. Solvent can help get them to lay down, but sometimes decals don't react favorably to solutions or maybe they have a large surface area. In either case, there's another option you might try: a hairdryer. Chuck Davis demonstrates his process on the wing of a Wingnut Wings 1/32 scale Halberstadt CL.II.

Photos and captions by Chuck Davis



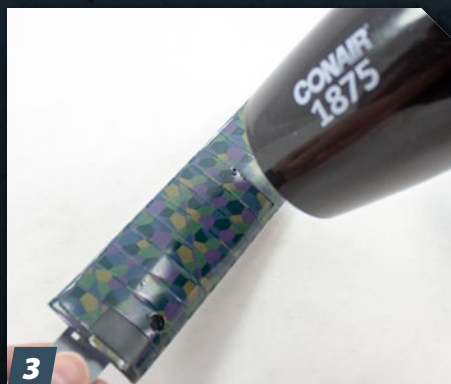
1

To apply lozenge camouflage, I first paint the wing's Tamiya gloss black (No. X-1), which hides minor imperfections in decal application. You don't have to your models gloss black before decals, but always apply your decals over gloss paint or clear coat.



2

The process starts like any other large-area decal application: with careful placement and alignment followed by pressing excess water from the decal with a soft cloth or cotton swab, taking care not to move the decal.



3

Instead of decal solvents, I use heat to get the decal to settle into the wing's surface detail. A hairdryer passed across the surface does the trick.



4

If necessary, a little help from a scalpel blade can help settle the decal around the wingtips and other complex surfaces.



5

Here, you can see that the decal has settled pretty well, but it's still a bit rough around the edges.



6

Another quick hit with the hairdryer conformed the film around the edges.



7

Then a touch of decal solvent applied to the ribs and other openings and edges ensures a tight fit, and the wing is finished. **FSM**